

CLOUDEO

Simplify your geo business

Geo-Infrastructure as a Service

develop – produce – market your geo-services

Emmanuel MONDON


emondon@cloudeo-ag.com

Moto & Rationale



SIMPLIFY YOUR GEO-BUSINESS

CLOUDEO teams with world-leading content and software providers to offer to you
a **unique geo-infrastructure as a Service**
bringing together data, software and processing power



Where & What for ?

- within a private cloud environment
- at a certified hoster in München, Bavaria, Germany
- to develop, produce and market
- new & innovative geo-services
- by CloudEO partners

CLOUDEO AG

Satellite Office,
Ludwigstrasse 8,
80539 Munich,
Bavaria / Germany

Created in February 2012 by :

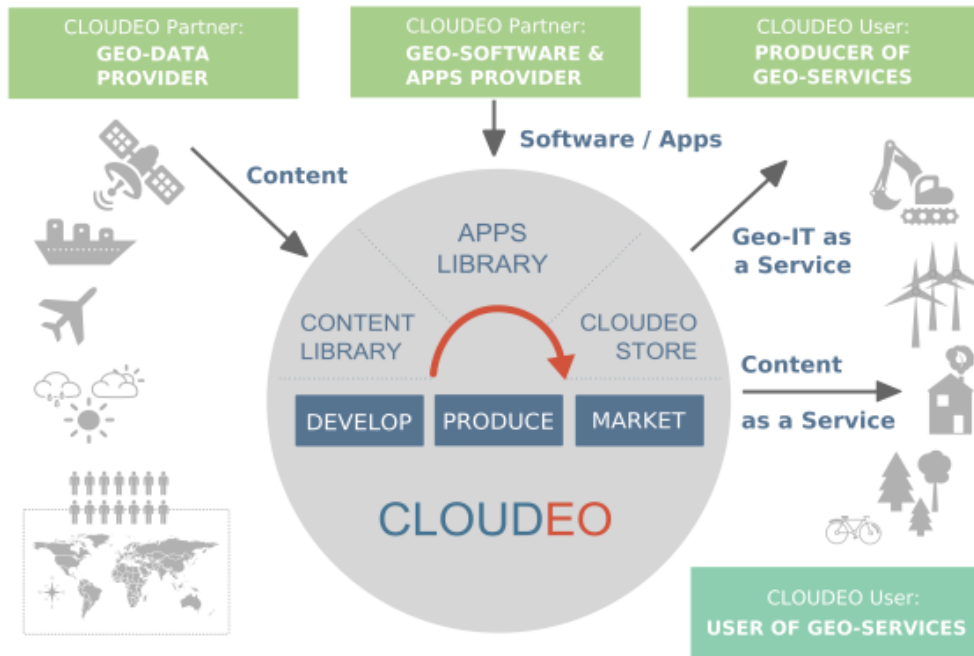
Dr. Manfred Krischke (CEO)
Dr. Ursula Benz (COO)
Dr. Martin Lange (Director, Technology)
And Stefan Scherer (System Architect)

9 people all based in Munich
6 nationalities

GEO MATCH-MAKING !



Geo-Match Making



Providers of Geo-Data



Providers of Geo-Software



Developers of Geo-Services

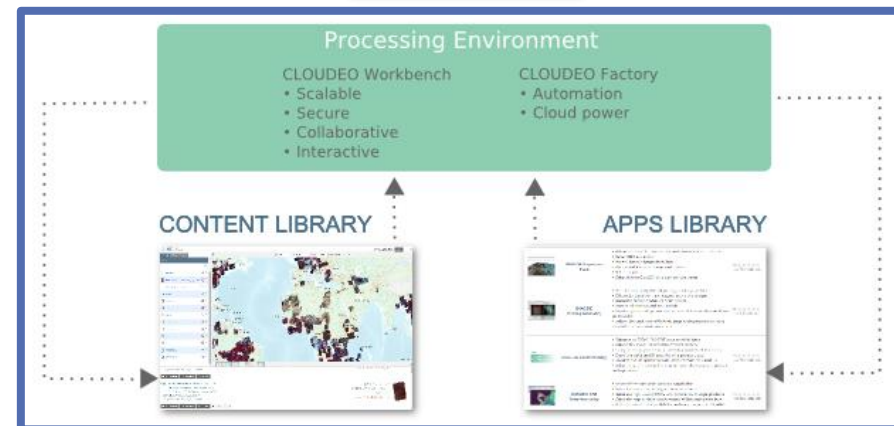


Users of Geo-Services

CLOUDEO STORE



Security, Performance, Flexibility & Scalability on CLOUDEO Geo-aaS



<http://store.cloudeo-ag.com/>

<http://platform.cloudeo-ag.com/>

The front-end: CLOUDEO Store

CLOUDEO STORE 🛒 HOMEPAGE

CATEGORY

- ALL PRODUCTS
- CONTENT ▶
- SOFTWARE / APPS
- GEO-INFRASTRUCTURE

THEMATIC

- AQUATICS
- AGRICULTURE
- TELECOMMUNICATION

PROVIDER

- ALL PROVIDERS ▶

HELP

- HELP DESK

SHOPPING CART
YOUR SHOPPING CART IS EMPTY.

CLOUDEO WORKBENCH

**CLOUDEO WORKBENCH
SUBSCRIBE NOW**

SIMPLIFY YOUR GEO-BUSINESS WITH CLOUDEO

Cloudeo teams with world-leading content and software providers to offer to you a unique geo-infrastructure as a service bringing together data, software and processing power

YOU HAVE GEO-PRODUCTS TO SELL? LET US KNOW!

BASE MAP OF ROMANIA

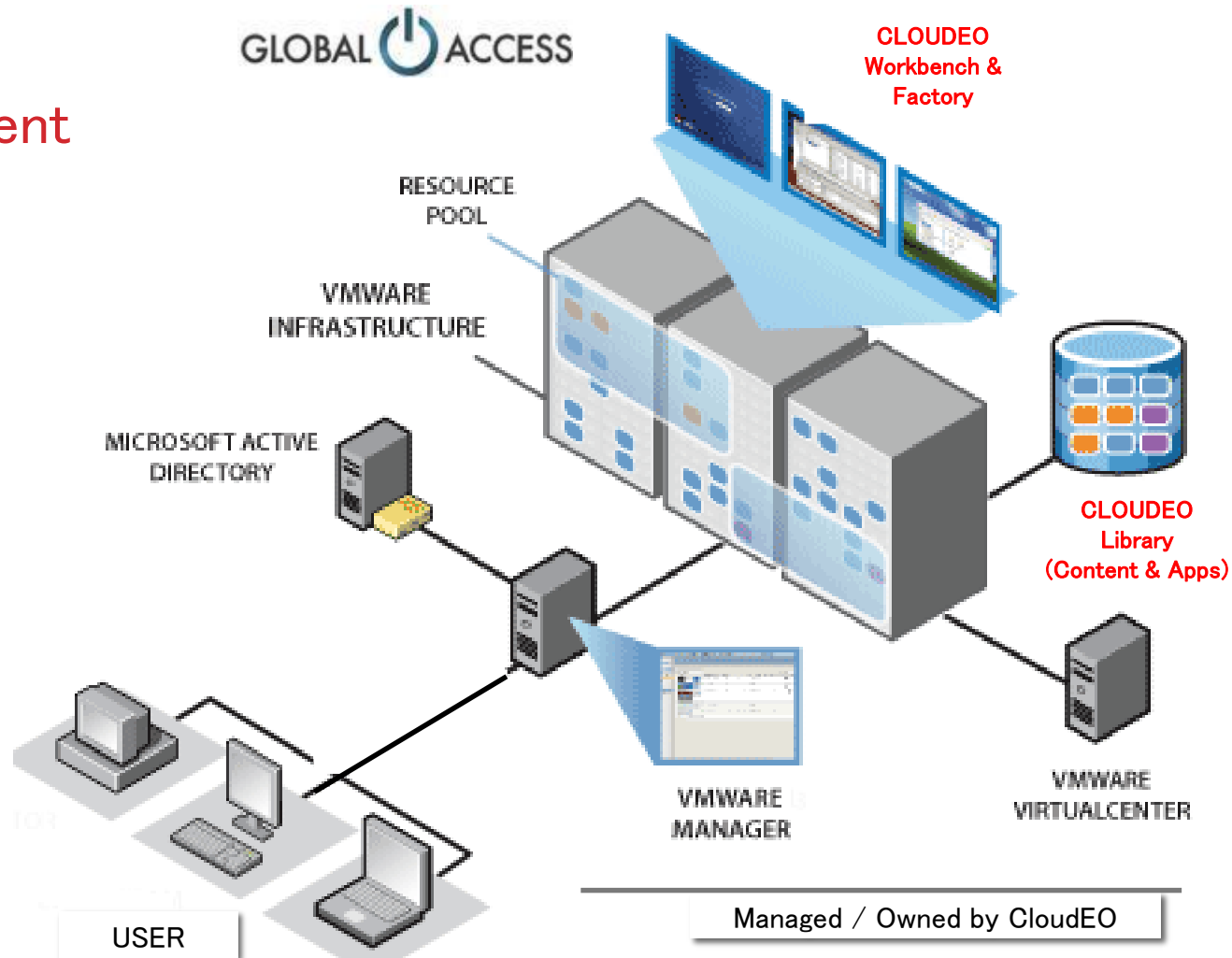
CLOUDEO WORKBENCH

DEIMOS-1 IMAGERY

The back-end: CLOUDEO Platform

Private & Hybrid Cloud Environment

- Hosted at Global Access, Tier 3 – Data Center:
- Certified according to e.g. ISO 27001, BSI,
- Located in Munich, Germany
- 99,982% uptime and a maximum of 1.6 hours downtime per year
- Scalability: Dynamic CPU allocation
- VMware Horizon View
- SSD Storage for an unparalleled performance



INFormation as a Service (INFOaaS)

Step 1: Subscription Service



Step 2: Satellite Image



Step 3: Image Processing



Step 4: Deliver results



CloudEO Value proposition

Bridging the gap between IaaS/PaaS and INFOaaS
at least for the Geospatial & Earth Observation domains

Information as a Service (INFOaaS)

CLOUDEO

Platform as a Service (PaaS)

Infrastructure as a Service (IaaS)

Information as a Service (INFOaaS)

(Geo)-PaaS

SaaS

Content-aaS :

Data
Derivative Products
Value-Added Products



CLOUDEO Store



CLOUDEO Platform



GOVERNANCE



SOURCING



Resources



SaaS : ERDAS Imagine & ENVI

CLOUDEO STORE


 SEARCH

CATEGORY

- ALL PRODUCTS
- CONTENT ▶
- SOFTWARE / APPS
- GEO-INFRASTRUCTURE

THEMATIC

- AQUATICS
- FORESTRY
- AGRICULTURE
- TELECOMMUNICATION



Get 2 months for the price of 1

NEW Delivery Service for Landsat-8

CLOUDEO Imagine Workbench



Order Options

CLOUDEO IMAGINE WORKBENCH

- Special remote sensing edition of CLOUDEO Project Workbench
- 100 GB high speed data transfer volume and 150 GB data storage
- ERDAS Imagine Professional
- Free support from our Geo- and IT-experts
- Discovery portal for Spot-6 and Pleiades data

Rating: ★★★★★
Too few votes yet

HOW TO BUY OR GET A QUOTE? HOME PAGE

CLOUDEO STORE

 SEARCH

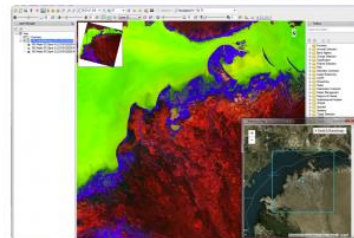
CATEGORY

- ALL PRODUCTS
 - CONTENT ▶
 - SOFTWARE / APPS
 - GEO-INFRASTRUCTURE
- THEMATIC
- AQUATICS
 - FORESTRY
 - AGRICULTURE
 - TELECOMMUNICATION

PROVIDER

- ALL PROVIDERS ▶

CLOUDEO VIRTUAL ENVI DESKTOP



- Product Options
- Description
- Details
- Demo

- Use automated ENVI workflows
- Batch process imagery and develop custom algorithms
- Work with unique data formats
- Discovery portal for SPOT 6/7, Pleiades, Landsat and other data
- 100 GB high speed data transfer volume and 150 GB data storage

Starting date
Date

E.g., 05.03.2015

Data-as-a-Service : Deimos 1 & 2

<http://www.deimos-imaging.com/>

Deimos-2 :

- 1 m panchromatique (PAN),
- ~ 4 m multispectral (MS)
- @ 600 km altitude, nadir view
- Launch : June 19, 2014 from Yasni (Russia)
- Two Deimos-2 pansharpened images (R,G,B and R,G,NIR) of Guangzhou city



Deimos2 - Canton (CH) - 20141018 - FALSE COLOUR.tif



Deimos2 - Canton (CH) - 20141018 - TRUE COLOUR.tif

Content-aaS : EO WATER QUALITY 30

CLOUDEO STORE HOME PAGE

SEARCH

CATEGORY

ALL PRODUCTS

CONTENT ▶

SOFTWARE / APPS

GEO-INFRASTRUCTURE

THEMATIC

AQUATICS

FORESTRY

AGRICULTURE

TELECOMMUNICATION

PROVIDER

ALL PROVIDERS ▶

HELP

HELP DESK

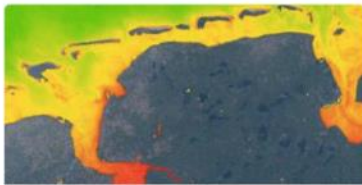
SHOPPING CART

YOUR SHOPPING CART IS EMPTY.

USER LOGIN

USERNAME *





EOMAP EOWATERQUALITY 30



- High Resolution, up to 4 times/month
- Coastal and inland water evaluation
- Subscription availability
- Worldwide available

Rating: ★★★★★
Too few votes yet

ORGANIC ABSORPTION, NORDDEUTSCHLAND

Order Options
Description
Details
Licensing & Pricing
Downloads

Water Quality Type *

Organic Absorption

Turbidity

Chlorophyll a

Subscription Type *

3 month

6 month

12 month

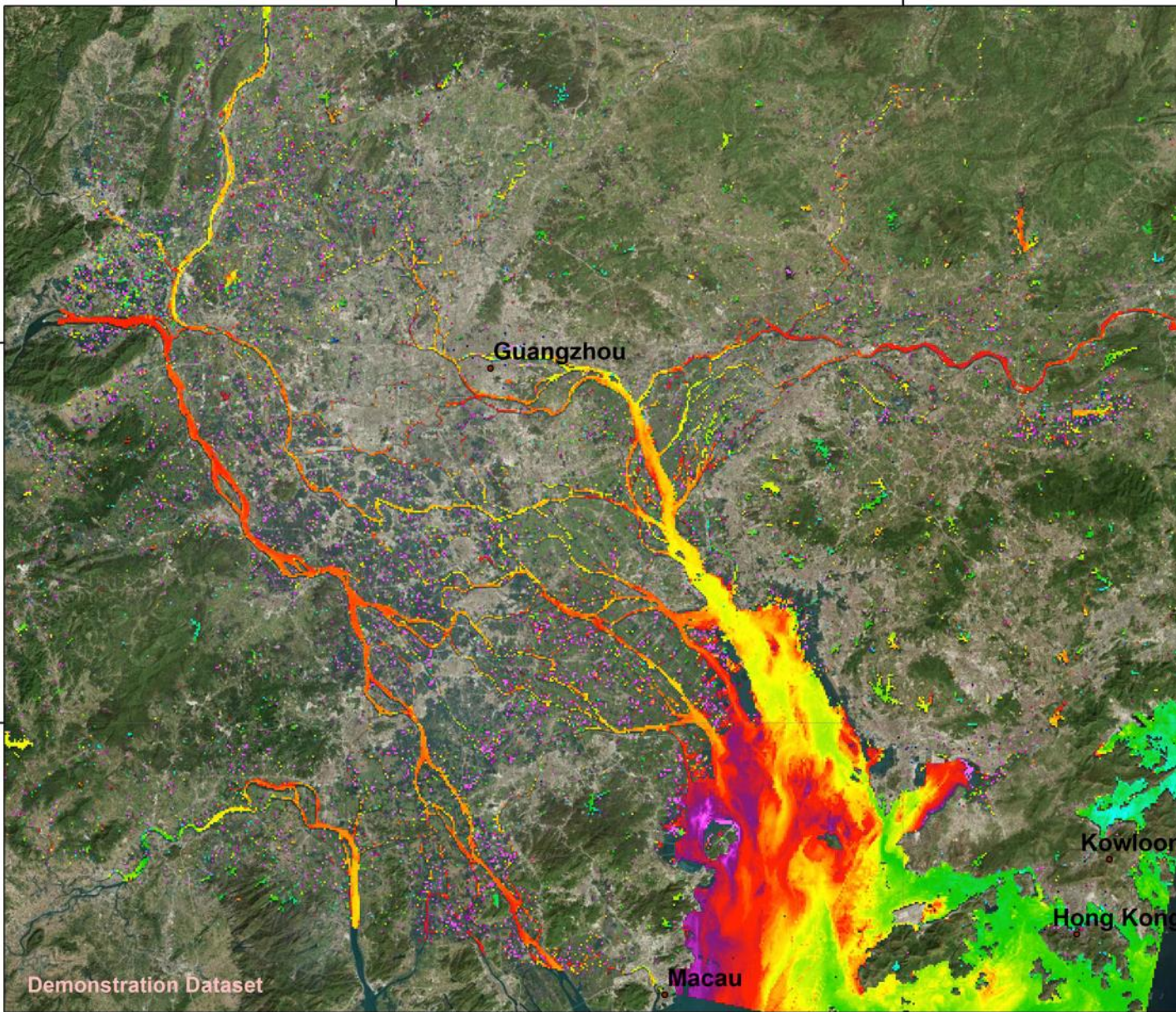
Subscription Starting Date

E.g., 23.10.2014
Earliest starting date is in 7 days.

EOMAP eoWaterQuality 30m Turbidity [ETU], Guangzhou, 2013-11-29



720000 800000



OVERVIEW MAP



DATA SOURCE

Sensor used:	Landsat 8
Revisiting time:	16 days
Spectral bands:	8
Spatial resolution:	30 m, resampled to 300m
Date of recording:	2013-11-29
Time of recording:	02:53:44 UTC

CARTOGRAPHIC INFORMATION

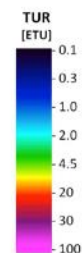
UTM Zone:	UTM Zone 49N	N
Datum:	WGS 84	
1:600.000	at DIN A3	



PROCESSING / ANALYSIS

Turbidity [ETU] is displayed.
 The data were processed with the Modular and Inversion System (MIP) by EOMAP at a pixel resolution of 300 m using Landsat 8 full resolution satellite data.
 (Includes material © USGS/NASA 2013.
 All rights reserved)

SERVICE PROVIDER



© Map produced by
 EOMAP GmbH & Co.KG
 Earth Observation and Mapping
 Schloss Seefeld
 Schlosshof 4
 D-82229 Seefeld, Germany
 Phone +49(0)8152 99861 10
 E-mail info@eomap.com
 www.eomap.com

Base map: ESRI © BaseMaps
 Source: Esri, DigitalGlobe, GeoEye, iSatellite, USDA, USGS, AEX, GeoMapping, AeroGRID, IGN, IGP, swisstopo, DeLorme, NAVTEQ, TomTom, Intermap, increment P Corp., GEBCO, USGS, FAO, NPS, NRCAN, GEBCO, IGN, Kadaster NL, Ordnance Survey, Esri Japan, METI, Esri China (Hong Kong), Swisstopo, and the GIS User/Community

720000 800000

CloudEO in Japan

- November 2014 : Reply to the AIST/GSJ Request for Information on Public Cloud Service for Satellite Image Processing
- December 2014 : First mission to Tokyo
- March 2015 : Second mission to Tokyo
- ...

Up to you and us to develop it further !

We are looking for local partners

to promote, sell and support CloudEO offering in Japan

like we did in China in 2014 with ChinaRS

<http://www.cloudeo-ag.com/news/chinars-and-cloudeo-signed-cooperation-agreement-new-global-force-geo-market>

ARIGATO !

THANKS !

VIELEN DANK !

MERCI BEAUCOUP !
