



# EU - Japan Round Table

Tokyo, 15<sup>th</sup> of November 2022

# MERMEC International Footprint: customers map

## MERMEC Worldwide References

**150+**  
customers

**67+**  
countries



## List of countries

1	Argentina	15	Germany	29	Morocco
2	Australia	16	Hong Kong	30	Netherlands
3	Austria	17	Hungary	31	Norway
4	Brazil	18	India	32	Peru
5	Bulgaria	19	Iran	33	Poland
6	Canada	20	Iraq	34	Danemark
7	Chile	21	Ireland	35	Puerto Rico
8	China	22	Israel	36	Russia
9	Cile	23	Italy	37	Saudi Arabia
10	Croatia	24	Japan	38	Senegal
11	Czech Republic	25	Kenya	39	Serbia
12	Egypt	26	Macedonia	40	Singapore
13	Finland	27	Malaysia	41	Slovakia
14	France	28	Mauritania	42	South Africa
				43	South Korea
				44	Spain
				45	Sweden
				46	Switzerland
				47	Syria
				48	Taiwan
				49	Tanzania
				50	Tibet
				51	Turkey
				52	United Arab Emirates
				53	United Kingdom
				54	United States
				55	Venezuela
				56	Vietnam

**World's leading supplier of Measuring Vehicles, including Rolling Stock and Measuring Systems, Advanced Services and having strong expertise in the production of Signalling Systems**

**MER MEC core business is design/manufacturing and supply of:**

**Measuring Trains**

**Measuring Systems**

**Analysis Software**

**Measuring Services**

**This ensures sustainable long lifecycles for both vehicle & measuring systems**







**GOAL: Predictive  
Maintenance through  
continuous monitoring  
of the railway lines**

# Track Machine Vision Systems

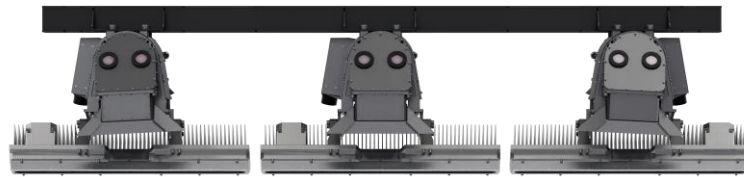
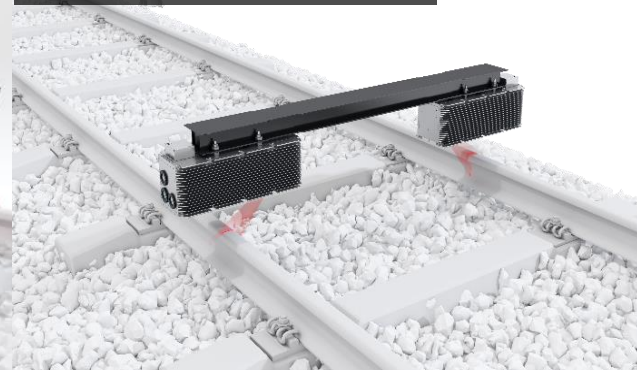
Fishplates Inspection System



V-CUBE



Head Check Detection System

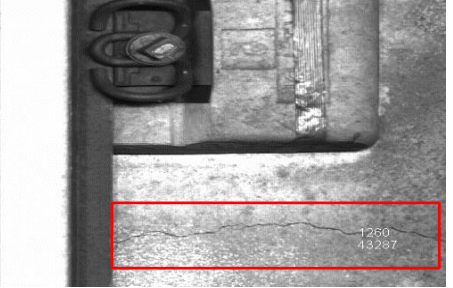
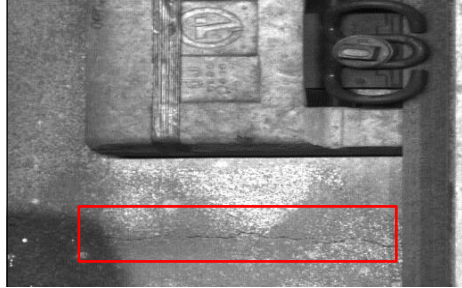
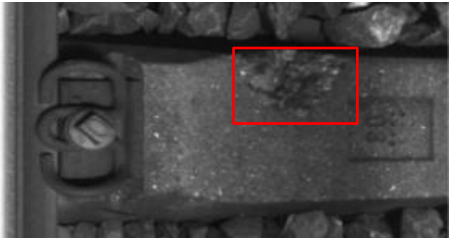
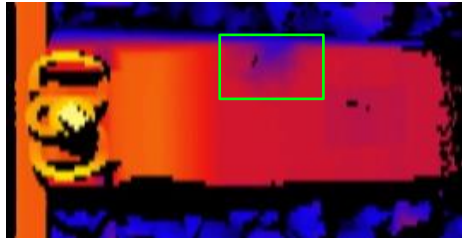
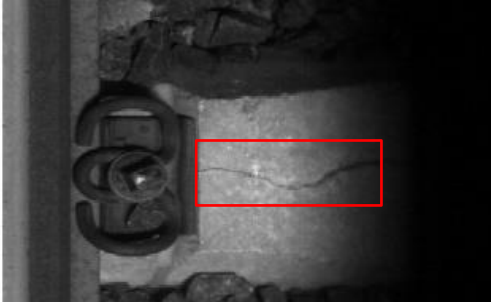
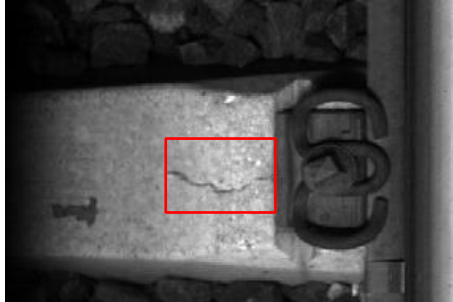
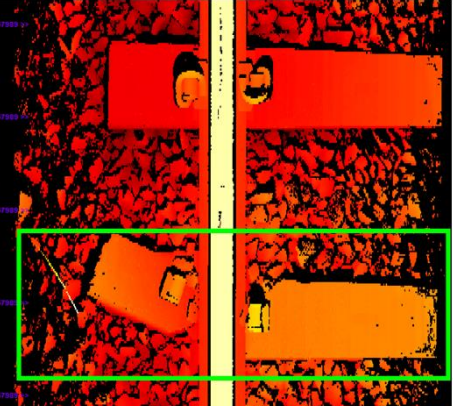
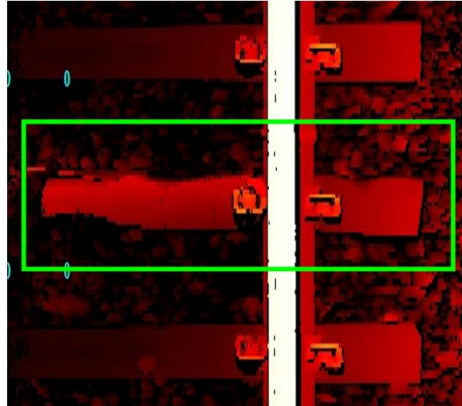
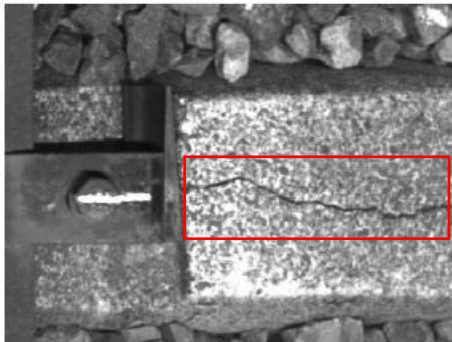
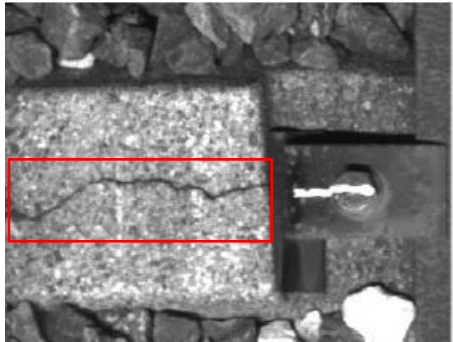




# Rail top surface check: Some examples of automatic fault detection



# Sleepers Check: Some examples of automatic fault detection





## Main advantages of Predictive Maintenance through continuous monitoring of the railway lines

- ❑ To apply a systematic approach for the railway infrastructure measurement and monitoring
- ❑ To move from cyclic and corrective maintenance of the railway infrastructure to on-condition and predictive maintenance
- ❑ To optimize the maintenance procedures and resources having the target to get economic savings and reduction of impact on the environment