



Regulatory Cooperation – Technological Innovation and Renewable Energy

Acting together – Transforming the mobility sector
EU Japan BRT, November 15, 2022, Tokyo

Antoine Feral



Our business groups



Civil



35

types of commercial aircraft powered by us



15,400

installed base around the world



17,900

total employees



Power Systems



40,000

customers in 13 different industries



20,000

reciprocating engines sold per year



9,000

total employees



Defence



160

customers in over 100 countries



16,000

engines in service around the world



11,100

total employees



Electrical

NEW MARKET



£52m

Research & Development



≈ 400

total employees



SMR

NEW MARKET



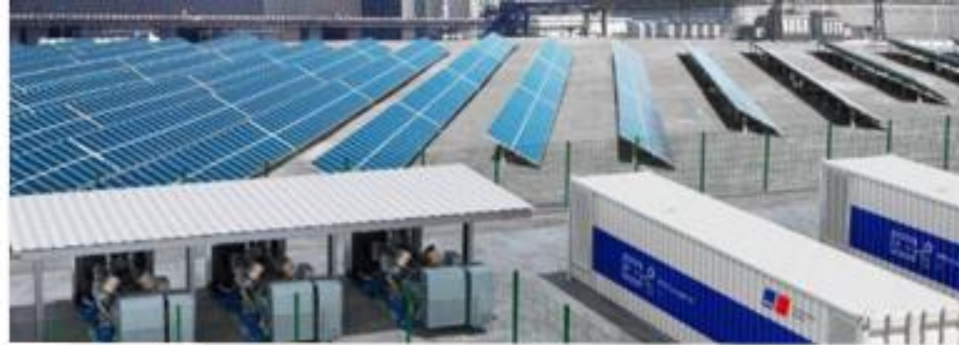
£16m

R&D to enter the UK GDA process



≈ 255

total employees



Customers

We have a large installed product base with over 150,000 engines and around 40,000 active customers worldwide, generating revenues from both OE and aftermarket services. Our established portfolio of products consists of a range of high-speed reciprocating diesel and gas engines delivered within a complete system solution or as a standalone engine. We also deliver climate friendly and completely CO2 neutral solutions.





PtX Ecosystem for Sectorcoupling

Value Proposition:

- Reduce GHG-emissions for „hard-to-electrify“ applications
- Use **existing infrastructure** for natural gas and liquid fuels
- Enable **renewable energy imports**
- Integrate **volatile renewables** in the energy system
- Reach **ambitious targets** for the reduction in greenhouse gases (GHG) in **all sectors**



PtX – Access to „Green & CO₂ Neutral“ Fuel utilizing renewable electricity

